

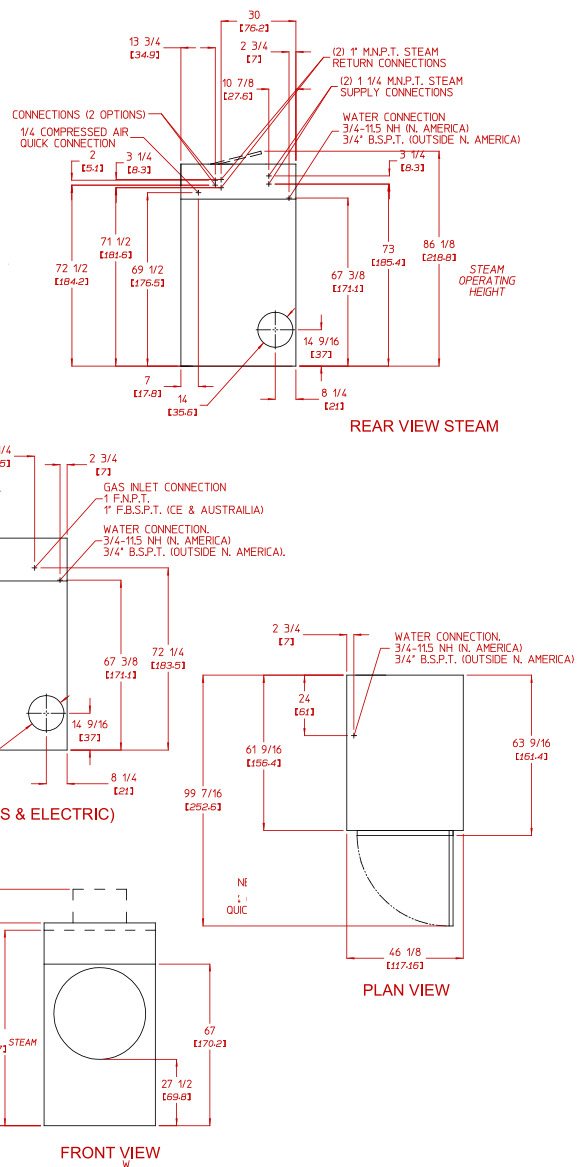
AD-115 Specifications

Tumbler Capacity (dry weight)	115 lbs. (52.16 kg)
Tumbler Diameter	42 (106.68 cm)
Tumbler Depth	41-1/4 (104.78 cm)
Tumbler Volume	33.10 cu ft (937.29 L)
Tumbler/Drive Motor	3/4 hp (0.56 kW)
Blower/Fan Motor	3 hp (2.24 kW)
Door Opening (Diameter)	31-3/8 (79.69 cm)
Door Sill Height	27-1/2 (69.85 cm)
S.A.F.E. Water Connection	3/4-11.5 NH (North America) 3/4 B.S.P.T. (Outside North America)
Dryers per 20h/40h Container	4 / 8
Dryers per 48h/53h Truck	9 / 10
Width	46-1/8 (117.16 cm)
Depth	63-9/16 (161.4 cm)
Height (gas/steam/electric)	84 (213.4 cm) / 86-1/8 (218.8 cm) / 98 (248.9 cm)
Airflow	60 Hz 2,100 cfm (59.47 cmm)
gas/electric/steam	50 Hz 1,750 cfm (49.55 cmm)
Exhaust Connection	14 (35.56 cm)
Voltage Available	208-575v 3ø 3,4 w 50/60 Hz
GAS MODEL:	
Approx. Net Wt.	1,260 lbs (571.53 kg)
Approx. Ship Wt.	1,400 lbs (635.03 kg)
Heat Input	343,000 btu/hr (86,435 kcal/hr)
Inlet Pipe Connection	1 F.N.P.T. 1 F.B.S.P.T. (CE and Australia Only)
ELECTRICAL MODEL:	
Approx. Net Wt.	1,260 lbs (571.53 kg)
Approx. Ship Wt.	1,400 lbs (635.03 kg)
Exhaust Connection (Diameter)	14 (35.56 cm)
Oven Size per pocket	
kW	Btu/hr (kcal/hr)
60	204,700 (51,600)
72	245,700 (61,900)
STEAM MODEL:	
Approx. Net Wt.	1,555 lbs (705.34 kg)
Approx. Ship Wt.	1,695 lbs (768.84 kg)
Steam Consumption	375 lb/hr (170.10 kg/hr)
Operating Steam Pressure	125 psi max (8.62 bar)
Exhaust Connection (Diameter)	14 (20.32 cm)
Boiler Horsepower (Normal Load)	11 Bhp
Compressed Air Volume	0.75 cfm (0.02 cmh)(2)
Supply Connection	1-1/4 M.N.P.T.
Return Connection	(2) 1 M.N.P.T.

Specifications in parentheses are metric equivalents.

9/14/10

Electrical Service Specifications					
GAS & STEAM					
SERVICE VOLTAGE	PHASE	WIRE SERVICE	APPROX AMP DRAW		CIRCUIT BREAKER
			60 Hz	50 Hz	
208	3ø	3	14.5	--	20
230	3ø	3	--	16.0	25
240	3ø	3	14.6	--	20
380	3ø	4*	--	8.7	15
400	3ø	4*	--	8.5	15
416	3ø	4*	--	9.0	15
460	3ø	3	7.8	--	15
480	3ø	3	7.8	--	15
575	3ø	3	5.8	--	15



Electrical Service Specifications

SERVICE VOLTAGE	PHASE	WIRE SERVICE	APPROX AMP DRAW		CIRCUIT BREAKER
			60 Hz	50 Hz	
60 kW Electric					
208	3ø	3	181	--	250
230	3ø	3	--	167	200
240	3ø	3	159	--	200
380	3ø	4*	--	100	125
400	3ø	4*	--	95	125
416	3ø	4*	--	92	125
460	3ø	3	83	--	125
480	3ø	3	80	--	100
575	3ø	3	66	--	100
72 kW Electric					
208	3ø	3	214	--	300
230	3ø	3	--	197	250
240	3ø	3	188	--	250
380	3ø	4*	--	118	150
400	3ø	4*	--	112	150
416	3ø	4*	--	109	150
460	3ø	3	98	--	125
480	3ø	3	94	--	125
575	3ø	3	78	--	100

40

88 Curren Road Fall River, MA 02720-4781 • 508.678.9000

www.amdry.com